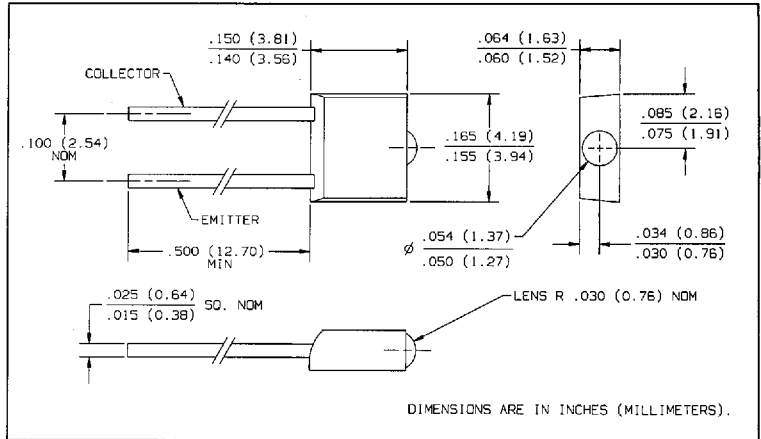
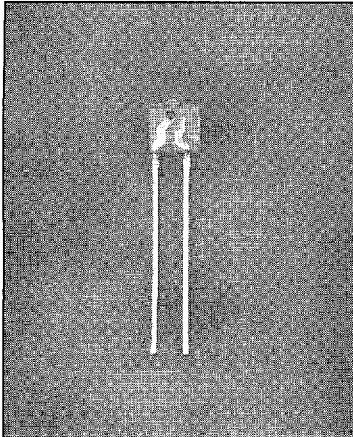


NPN Silicon Phototransistors

Types OP509A, OP509B, OP509C



Features

- Lensed for high sensitivity
- Easily stackable on 0.100 inch (2.54 mm) hole centers
- Low cost plastic package
- Mechanically and spectrally matched to the OP169 and OP269 series of infrared emitting diodes

Description

The OP509 series consist of NPN silicon phototransistors mounted in lensed, clear plastic, "end looking" packages. The lensing effect of the package allows an acceptance half angle of 25° measured from the optical axis to the half power point.

Absolute Maximum Ratings ($T_A = 25^\circ\text{C}$ unless otherwise noted)

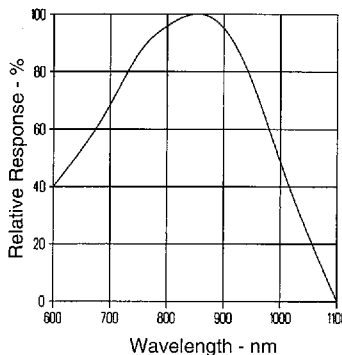
Collector-Emitter Voltage	30 V
Emitter-Collector Voltage	5.0 V
Storage and Operating Temperature Range	-40° C to +100° C
Lead Soldering Temperature [1/16 inch (1.6 mm) from case for 5 sec. with soldering iron]	260° C ⁽¹⁾
Power Dissipation	100 mW ⁽²⁾

Notes:

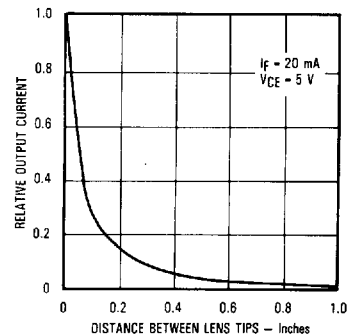
- (1) RMA flux is recommended. Duration can be extended to 10 seconds max. when flow soldering. Maximum 20 grams force may be applied to the leads when soldering.
- (2) Derate linearly 1.33 mW/° C above 25° C.
- (3) Light source is an unfiltered GaAs LED with a peak emission wavelength of 935 nm and a radiometric intensity level which varies less than 10% over the entire lens surface of the phototransistor being tested.
- (4) To calculate typical collector dark current in μA , use the formula $I_{CE0} = 10^{(0.040T_A - 3.4)}$ where T_A is ambient temperature in ° C.

Typical Performance Curves

Typical Spectral Response



Coupling Characteristics of OP169 and OP509



6798580 0002621 132

Types OP509A, OP509B, OP509C

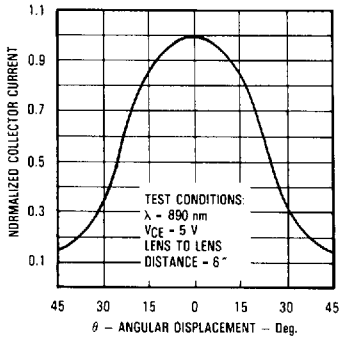
Electrical Characteristics ($T_A = 25^\circ\text{C}$ unless otherwise noted)

SYMBOL	PARAMETER	MIN	TYP	MAX	UNITS	TEST CONDITIONS	
$I_{C(ON)}$	On-State Collector Current	OP509C OP509B OP509A	0.7 1.4 5.7		10.6	mA	$V_{CE} = 5.0\text{ V}$, $E_o = 5\text{ mW/cm}^2(3)$
$I_C/\Delta T$	Relative I_C Change with Temperature		1.00			%/ $^\circ\text{C}$	$V_{CE} = 5.0\text{ V}$, $E_o = 1.0\text{ mW/cm}^2(3)$, $\lambda = 890\text{ nm}$
I_{CEO}	Collector-Dark Current			100		nA	$V_{CE} = 10.0\text{ V}$, $E_o = 0(4)$
$V_{(BR)CEO}$	Collector-Emitter Breakdown Voltage	30				V	$I_C = 100\ \mu\text{A}$
$V_{(BR)ECO}$	Emitter-Collector Breakdown Voltage	5.0				V	$I_E = 100\ \mu\text{A}$
$V_{CE(SAT)}$	Collector-Emitter Saturation Voltage			0.40		V	$I_C = 250\ \mu\text{A}$, $E_o = 5\text{ mW/cm}^2(3)$

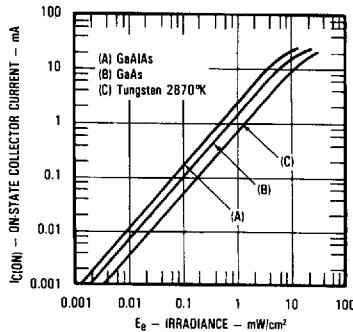
PHOTOSENSORS

Typical Performance Curves

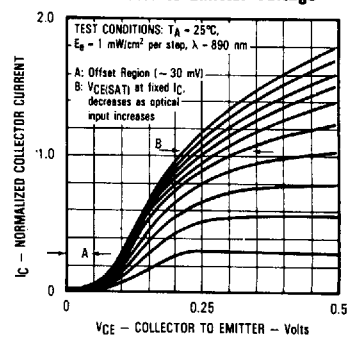
Normalized Collector Current vs. Angular Displacement



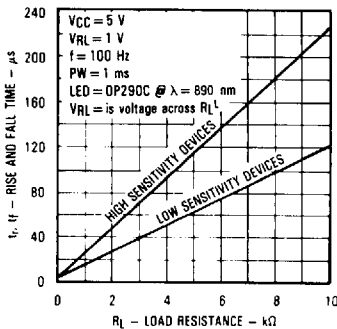
On-State Collector Current vs. Irradiance



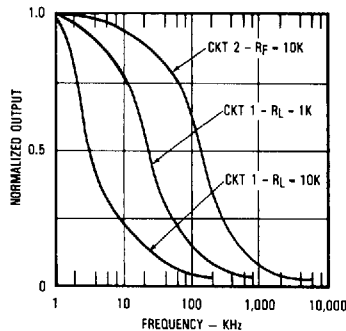
Normalized Collector Current vs. Collector to Emitter Voltage



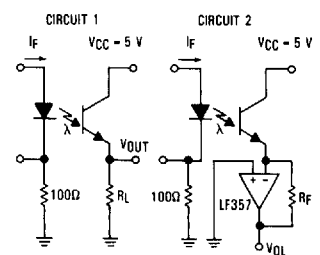
Rise and Fall Time vs. Load Resistance



Normalized Output vs. Frequency



Switching Time Test Circuit



Test Conditions:
Light source is pulsed LED with t_r and $t_f \leq 500\text{ ns}$.
 I_f is adjusted for $V_{OUT} = 1\text{ Volt}$.

6798580 0002622 079

Optek reserves the right to make changes at any time in order to improve design and to supply the best product possible.

Optek Technology, Inc. 1215 W. Crosby Road Carrollton, Texas 75006 (972)323-2200 Fax (972)323-2396